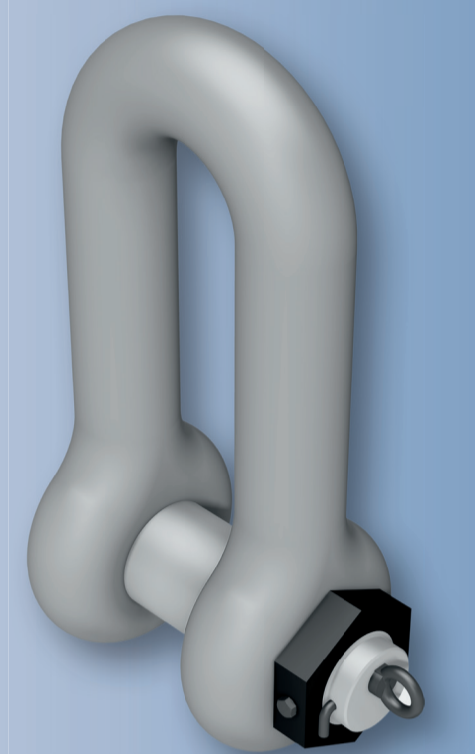
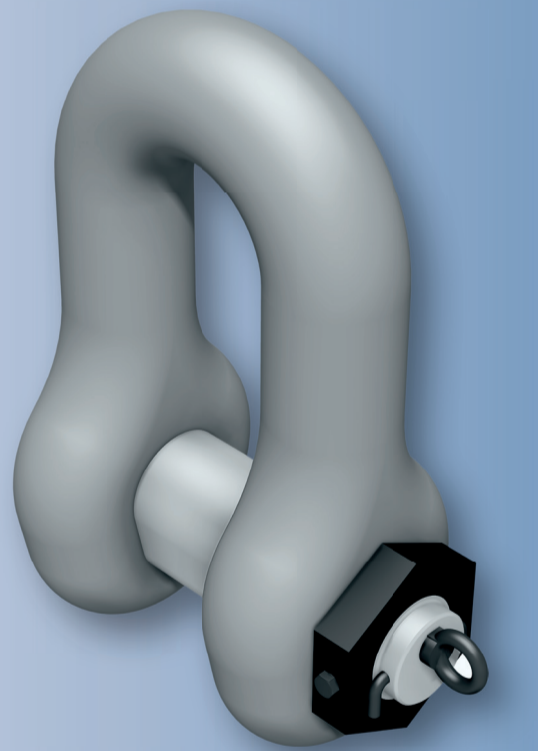


# SPM System Kuwait

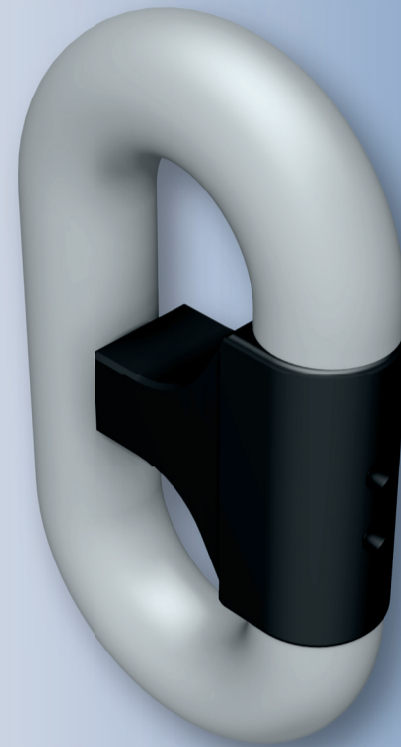
**End Joining Shackle**  
84 mm



**Joining Shackle**  
85 mm



**Trident Installation Link**  
84 mm



**Made in Germany**

A single point mooring (SPM) is a loading buoy anchored offshore that serves as a mooring point and interconnect for tankers loading or offloading gas or fluid products. SBMs are the link between the geostatic subsea manifold connections and the weathervaning tanker. They are capable of handling any size ship, even very large crude carriers (VLCC) where no alternative facility is available.

The strongest link  
in your supply chain. FEUBO.

